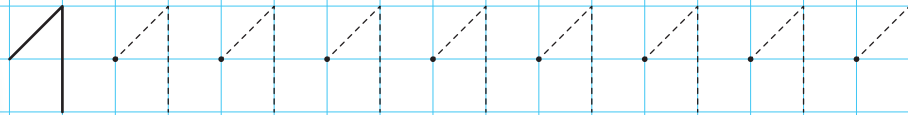
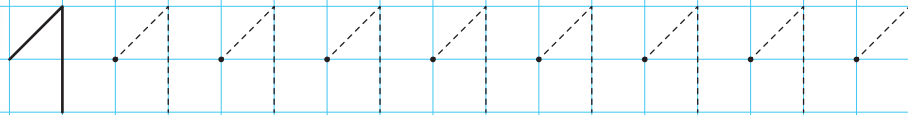
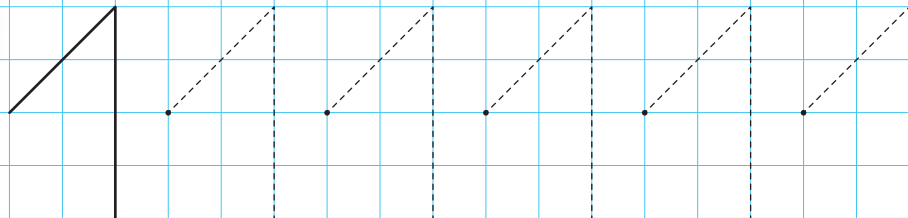
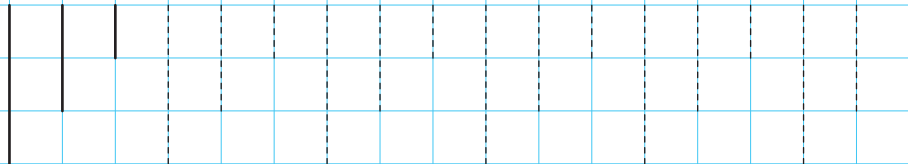
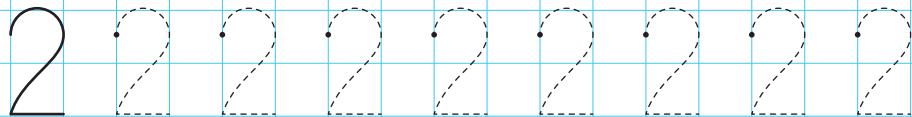
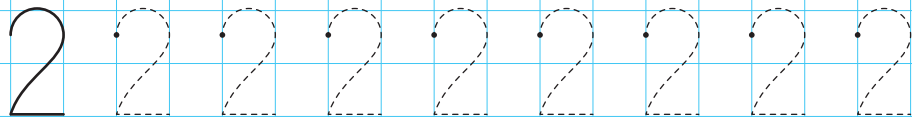
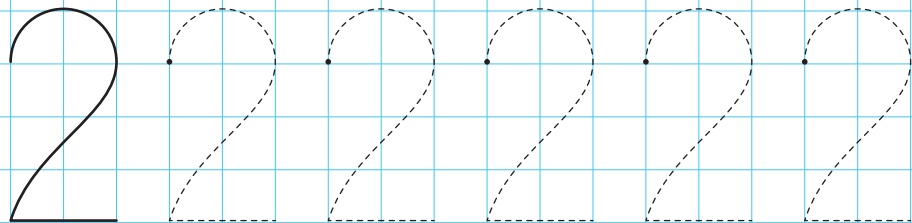
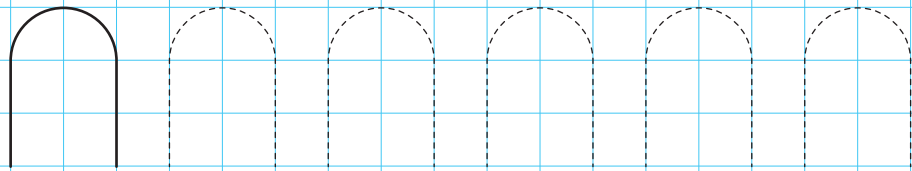
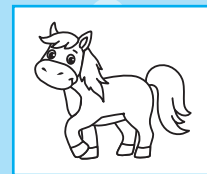
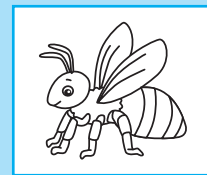


ОДИН



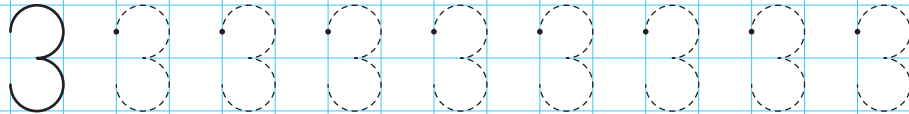
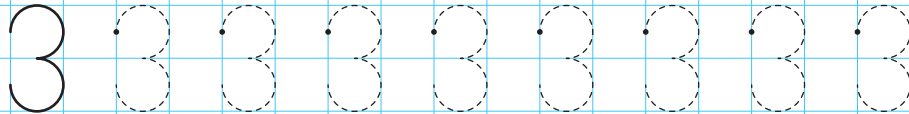
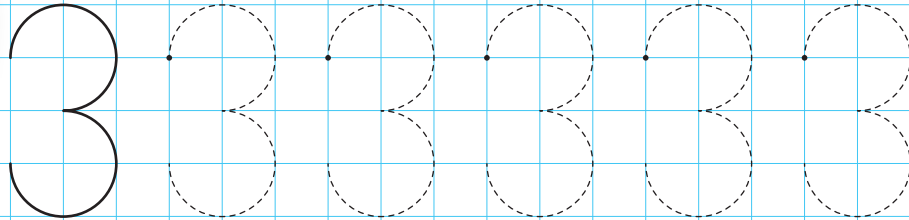
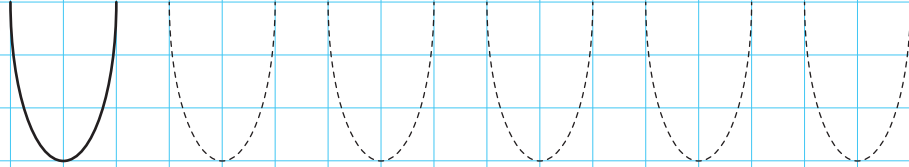


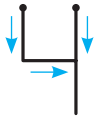
два



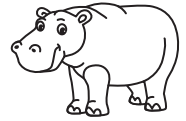
3

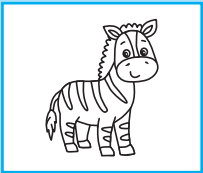
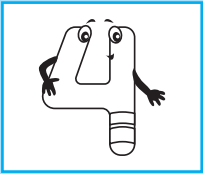
три





четыре





A large grid area for handwriting practice, enclosed in a decorative blue border with a scalloped edge. The grid is composed of light blue lines forming a 20x10 grid. The first row contains the number '1' followed by ten dashed '1's for tracing. The second row contains the number '4' followed by ten dashed '4's for tracing. The remaining eight rows are empty for independent practice.